

from talking to creating

feelings

2013

report

Fundación SURA, established in 1971, is devoted to social development projects through institutional contributions and corporate volunteer corps. Its resources are channeled from Grupo SURA, Suramericana and its subsidiaries

board

of directors

Principal Members

David Emilio Bojanini García,
President of Grupo SURA

Gonzalo Alberto Pérez Rojas,
President of Suramericana

José Alberto Vélez Cadavid,
President of Grupo Argos

Alternate Members

Fernando Ojalvo Prieto,
Vice President of Corporate Affairs of Grupo SURA

Juan David Escobar Franco,
Vice President of Seguros Suramericana

Executive Director

Luz Marina Velásquez Vallejo

Statutory Auditor

Principal
Karen Castaño Gutiérrez
Member of KPMG Ltda.

From a word, a feeling,
an emotion, an action.

Within each of us, life...

contents

- From Talking to Creating Feelings • 8
- What We Do • 10
- We Are Present • 12
- Several Figures • 14
- Teamwork • 15
- Lines of Investment
 - Sex Education and Healthy Coexistence • 16
 - Community Integrated Management • 28
 - Cultural Promotion • 44
 - Training for Competitiveness • 58
- Volunteer Corp • 70
- Housing Fund • 82
- Lessons Learned and Challenges • 88
- Financial Statements • 93
- Notes to Financial Statements • 97

from talking to creating **feelings**

As in prior years, this report highlights **the voice of those that give life to Fundación SURA**, those who allow us to glimpse into the realities and the dreams conceived in regions; but above all, to learn about the enormous wealth which resides within each being.

Discovering which words make sense in each situation leads us to carry out actions with purpose, and to look into each other's eyes and acknowledge that **our differences make us unique but our feelings make us one.**

In addition to providing management results, we share hereafter conversations and insightful answers to simple questions; **in the end, these are a legacy of life and soul.**

what we do

Lines of investment

- Sex Education
- Community Integrated Management
- Cultural Promotion
- Training for Competitiveness

Volunteer corp

A setting to share time, knowledge and talent.

An opportunity for citizen participation which leads to understanding the reality, being a part of its transformation and how to manage social lessons learned.

Housing fund

A special program aimed at collaborators and employees of suppliers at SURA's offices.

Criterion for social participation

- Contribution to local development
- Mayor, on a medium and long-term basis
- Comprehensiveness
- Active community participation
- Inter-institutional alliances

We acknowledge values

We develop capabilities and talents

We enhance communities

We promote quality of life

Institutional presence

We participate in the following board of directors

- Fundación Empresarios por la Educación
- Fundación Dividendo por Colombia
- Corporación Antioquia Presente
- Museo de Arte Moderno de Medellín
- Centro de Ciencia y Tecnología de Antioquia
- Corporación Excelencia en la Justicia
- Corporación Fomento de la Música
- Corporación Colombia Internacional
- Fundación Amigos del Parque Explora
- Parque Explora
- Fundación El Cinco

We participate in the following alliances

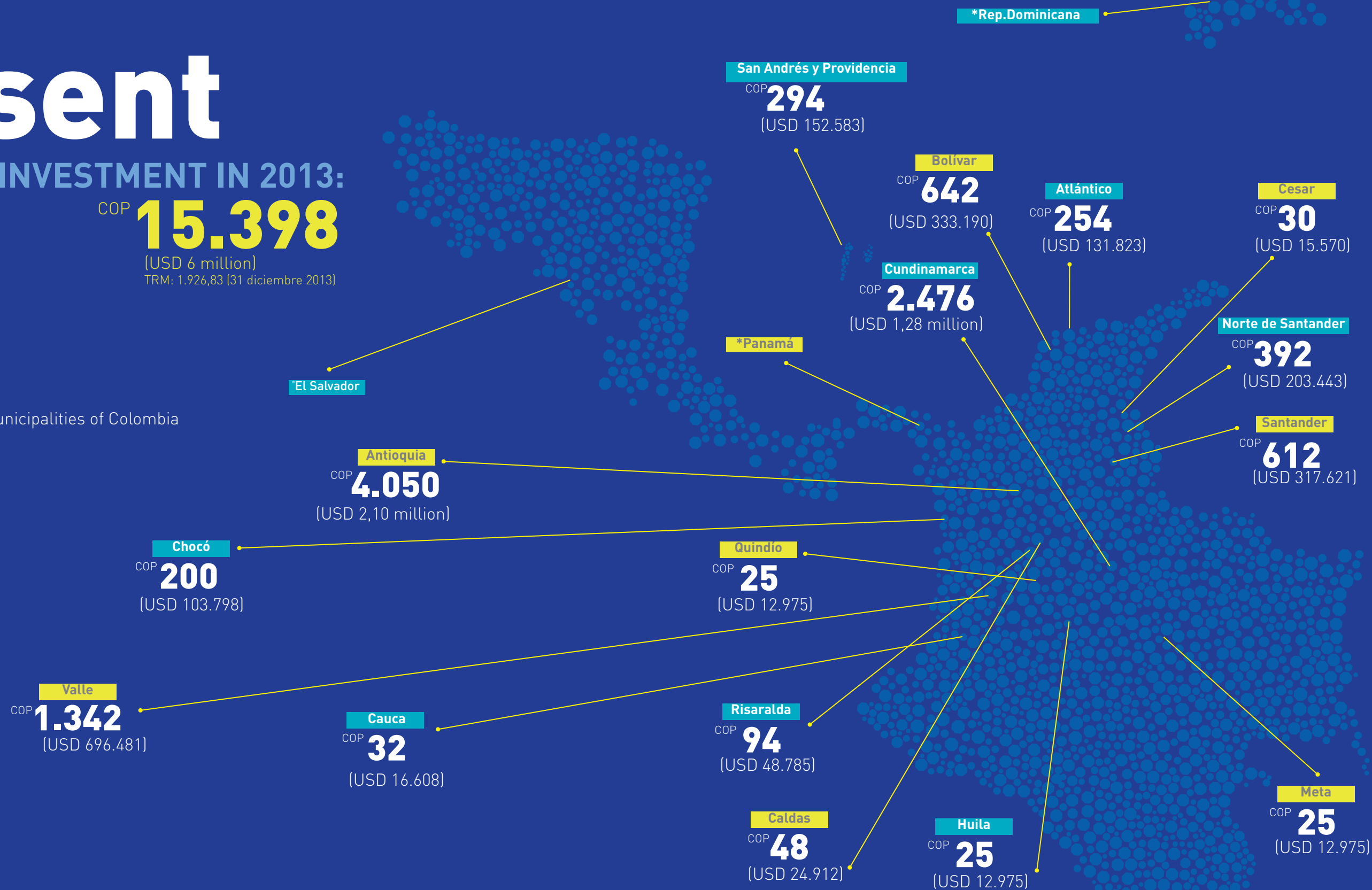
- Educación para la Sexualidad y Construcción de Ciudadanía
- Ministry of National Education of Colombia
- Redeamérica - Red Temática sobre Desarrollo de Base

we are present

INVESTMENT IN 2013:

COP **15.398**
(USD 6 million)
TRM: 1.926,83 (31 diciembre 2013)

- 4 countries
- 16 departments and 65 municipalities of Colombia
- 120 entities
- 130 initiatives



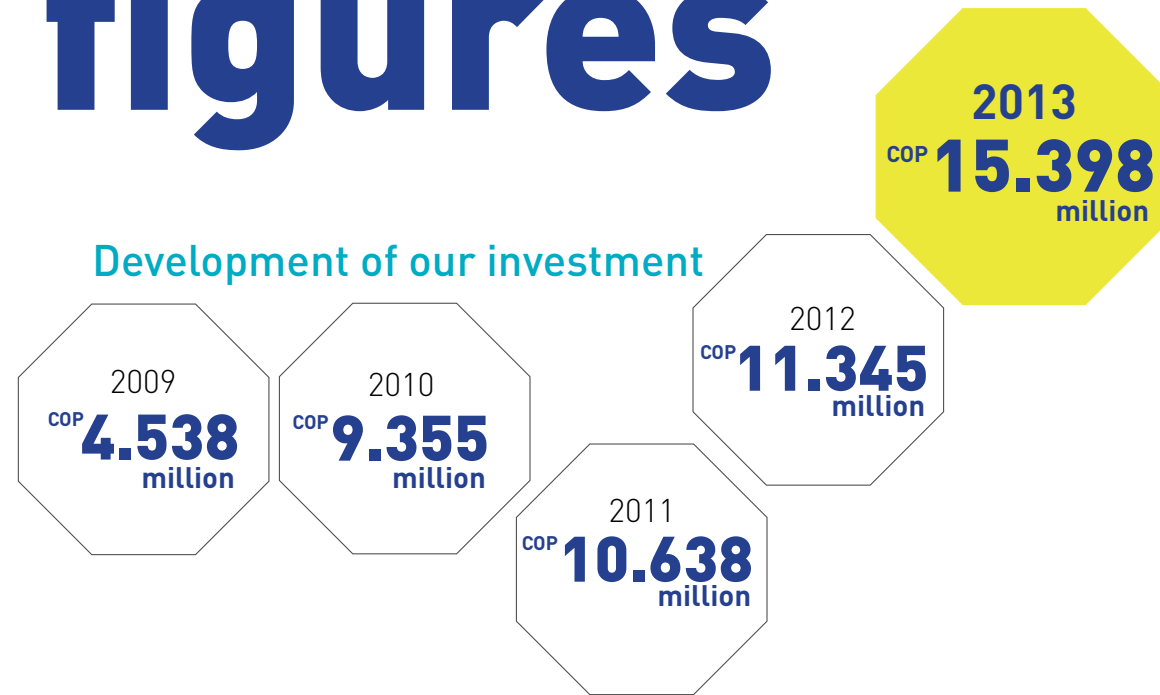
OVERSEAS COP 875 MM (USD 454,113) (Panama, Dominican Republic, El Salvador)

**Investment expressed in millions of Colombian pesos

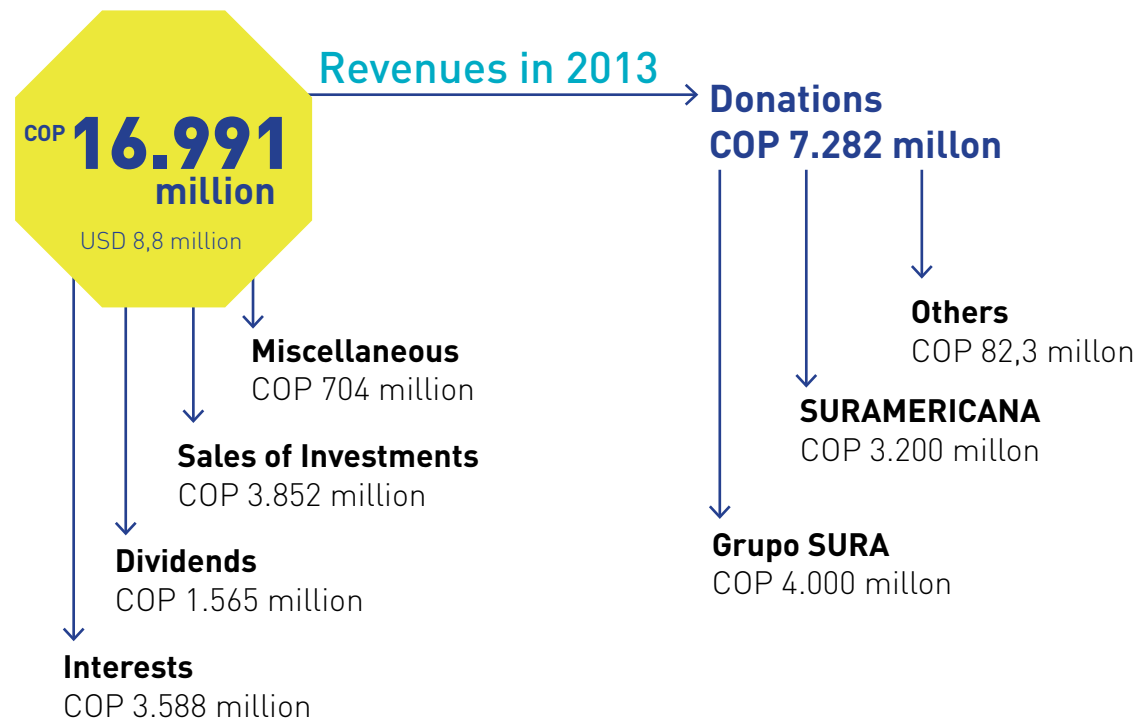
***Only includes four major lines of investment and other contributions

several figures

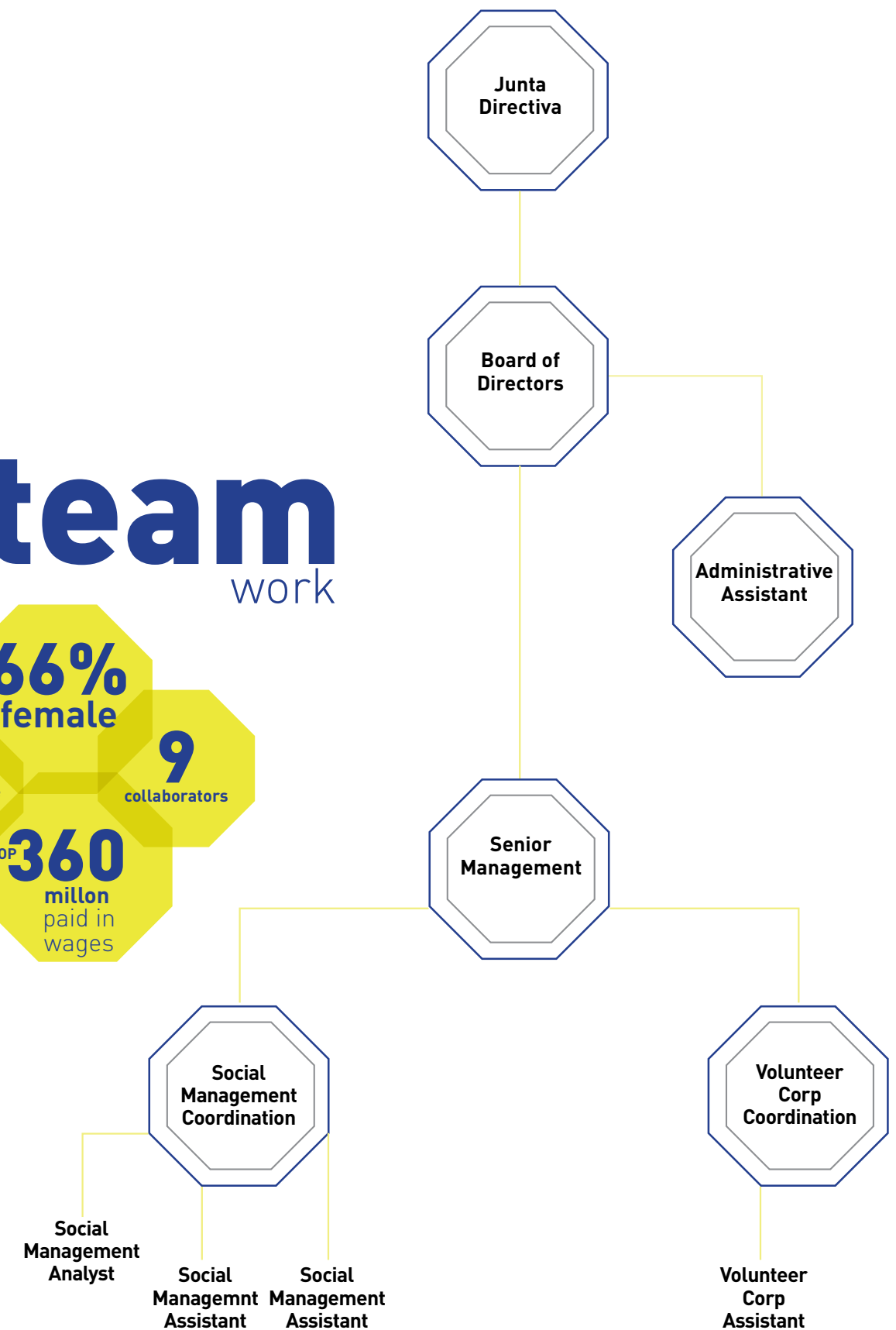
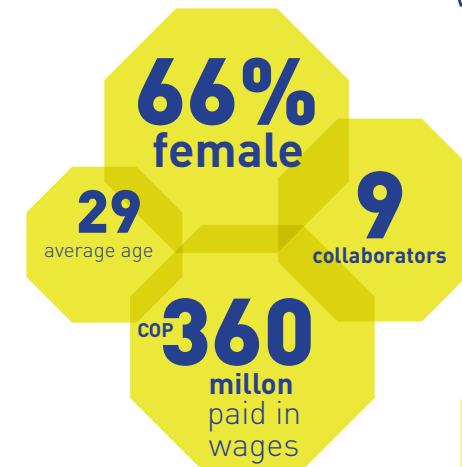
Development of our investment



Revenues in 2013



team work



sex education and healthy coexistence



FÉLIX Y SUSANA





Félix y Susana is a program for sexual health education and healthy living led by Fundación SURA which targets students in elementary school. This program is based on the respect and promotion of Human Rights, and is aimed to contribute in strengthening protective school environments.

ACHIEVEMENTS

- Establishing characteristics and selection processes
- Training and assistance for teachers and directors
- Providing supplies
- Training families
- Managing knowledge
- Creating social mobilization

The development in classrooms of **Félix y Susana** involves ten educational materials which support the work done by teachers, which help address these subjects within the different school courses.

ALLIES

Ally operato
Juntos Construyendo Futuro Corporation

Other allies
Ministry of National Education

Subject Population
Teachers, directors, adults responsible, boys and girls in elementary school

ACHIEVEMENTS

- Expanded coverage of the Program – 9 departments and 41 municipalities of Colombia
- Selection and characterization of 111 education institutions
Today, the Program covers 196 elementary schools
- Engagement with education secretaries of 14 territorial entities
- Alongside professionals from the Ministry of National Education of Colombia, technical assistance was provided to enhance the Territorial Technical Teams
- Engagement of 1,664 new teachers to the Program
- Educational institutions with trained teachers began activities to engage and train families in learning processes related to comprehensive child protection.
- Creation of a nationwide inter-disciplinary team, with opportunities for training and sharing experiences.

hugs

Do you like to hug?

JUAN DIEGO

If I have to hug her, I don't.

I hug puppies, their fur is so soft.

What do you feel when you hug a puppy?

JUAN DIEGO

Hair.

And you, Valentina, do you like to hug?

VALENTINA

Yes.

And who do you hug?

VALENTINA

My mother, my father, my brothers and sisters.

And why do you hug them?

VALENTINA

Because they are my family.

And what do you feel when you hug them?

VALENTINA

Love.

Who are Félix and Susana?

VALENTINA

They are two kids and **they teach us to value our body, to take care of it**, and they also teach us other values.

What values have you learned?

VALENTINA

Respect.

Valentina and Juan Diego

Two students, age 10, in
5th grade

Félix y Susana, Bogota, Cundinamarca



What made you become a teacher?
It is in my blood. Yolima

What do you give in a hug?

I deliver all of my support, my trust... I think that one delivers, in a hug, **something like an “I love you.”**

What are the achievements with Félix y Susana?

That is the part that I have enjoyed, the kids are more aware of their body.

And which have been the difficulties?

There are still parents that say, “Miss, are you really going to talk about that with the children?”

For instance I learned as a child about sexuality and how my body was going to change through my eldest sister. My parents never sat down with me and told me about this directly, it was a taboo in our days for our parents. So I’m trying to break that ice with the parents, it’s no longer taboo, and **we will address sexuality as something natural.**

Define Félix y Susana in one or two words

Loving children... they absorb everything.

Yolima Salcedo
a teacher
Félix y Susana, Barranquilla, Atlántico

Do you like to hug?

Yes, there are moments, not always. We try to do as we were raised, we try to convey the same thing [...] **I know that we transfer affection with hugs**, how you feel at that moment, if you are sad, if you are cheerful [...] and yes, it's good to hug and I'm practicing it a bit more.

What do you give in a hug?

Strength, I believe. In fact, there are moments when I'm short of words, there are no words needed, so **yes, it's like strength, support, I'm here with you, you can count on me.**

How is a hug?

Hugs depend, if they are from your husband or from your children.

Martiza Padilla
Miguel Ángel's mom
Félix y Susana, Barranquilla, Atlántico





A dog was walking around when a pig came up and hit him. The dog said “What is wrong with you?” and the pig said “porkchop!”
María Camila

- Einer Andrés**
13 years old and in 5th grade
- María Camila**
9 years old and in 5th grade
- William David**
11 years old and in 5th grade
- Félix y Susana, Barranquilla, Atlántico**

Why do you like to hug?

- WILLIAM**
Because it’s fun, it gives team-spirit, love, friendship.
- MARÍA CAMILA**
Because of the love we feel, because of the friendship you feel for that person.

EINER ANDRÉS
You feel happiness when you hug a loved one.

How do you give a hug?

- MARÍA CAMILA**
With lots of love.

Who likes to smile?

- WILLIAM**
I do, because its joy, **with a smile you make new friends.**

What makes you laugh?

- WILLIAM**
Something funny.
- What smile do you like the most?
- WILLIAM**
All.

What do you do with Félix y Susana?

- MARÍA CAMILA**
We learn.

What do you learn?

- MARÍA CAMILA**
About sexuality, about the parts of the body, we learn about our body, about friendship.

community **integrated management**

Productive initiatives engaging education processes, health care promotion, and institutional enhancement.



In Colombia





Memory and Creativity:
The indigenous business

The project covers 12 departments, 16 locations of Colombia

Operator
Fundación Etnollano

Subject Population
Women from 17 indigenous communities which belong to 14 ethnic groups of Colombia

Total women participating in the project
271

Achievements

- Consolidation of plans with 3 of the 17 communities (Kogui, Embera and Tule)
- Elaboration of the social, organizational and cultural diagnostic
- Workshops on creative processes and trade development
- Construction of a ceramic oven for the technological improvement of crafts produced by the Cubeo community.

Improved working conditions of waste pickers in Cartagena

Department of Bolivar, District of Cartagena

Operator
RECIMED

Subject Population
6 organizations of waste pickers from Cartagena

Achievements

- Implementation of best practices in diverse areas of the organization
- Training on improving technical – environmental processes in the warehouse.

Enhancement of social and corporate initiatives for rural and urban populations

Enhancement of social and corporate initiatives for rural and urban populations Department of Nariño, presence in 6 municipalities

Allied Operator
Contactar

Subject Population
159 rural producers from 8 solidarity organizations in the sectors of milk, fish, horticulture, and coffee

Achievements

- Financial leverage of 8 rural producing organizations for working capital
- Socio-economic and productive characterization of organizations

Vitalius technology transfer for La Avención community sugar mill

Department of Antioquia, municipality of Yolombo, village of Bareño

Affiliate Operator
Vitalius

Subject Population
19 partners of La Avención community business

Achievements

- Elaboration of the sanitation and technological profile, appraisal of the sugar mill’s potential
- Methodology transfer to fortify the panela (brown sugar loaf)
- Creation of a shared brand and consolidation of partners for direct commercialization.

Feeding ourselves for a better life

6 villages from El Salado town, department of Bolívar

Allied Operator
Fundación Semana

Other Allies
Protección S.A.

Subject Population
141 families from the villages of El Salado

Achievements

- Disclosure of community management for food and nutritional safety
- Agro-ecological establishment and management of orchards
- Technical assistant provided to install productive yards.

planting

In the country, it can refer to planting sugar cane in the ground.

We can also provide planting to our youth,
let them pick what we leave behind

Norberto

As a leader, what do you plant?

You plant what you need to persevere, you can't give up at the first problem you have, instead, you keep thinking ahead.

That's the legacy I leave them.

What benefits has the sugar mill given to the village?

Benefits... many. Lots of people live off this. This is the raw material, this is the company of the village, and the money we earn here, stays here in the village.

Who here works the hardest?

Everybody. Here at 10 p.m. everybody you talk to is tired.

After 10 hours you don't want to talk, because the day is long.

Indeed, work teaches you lessons, if I am going to complain to a mullet that arrives late at 6 p.m., if I scold him, I know that it could turn into a hassle for me since he's tired too.

I avoid saying anything to him right then. So if others see that I am tired they don't say anything to me either. One learns when its time to speak.

Norberto López

a leader

La Avención community business

Vareño village, Yolombo, Antioquia

What's planting for you?

Well, if we plant corn it's to pick corn on the cob, and when it's ripe you can eat it roasted, fried in a dough or in a soup. I'm currently planting until my legs cave in. To live, that's my hope. That's why I say, "I want to see Reciclar turn into a great company **so that when I can no longer move my feet, I can say, go to Reciclar and send me money for rice.**"

How do you plant well?

By planting good fruits, because if I plant bad fruits, I will pick bad fruits, **one has to plant good fruits.**

Does your family also work in recycling?

In this neighborhood **most of the people depend on recycling**, and since this place is stratum 0-1, no one has the capabilities to work for a company since they demand so much[...]. For instance me, I can't do it, but I can go make contacts for the materials, but I can't stay full time.

What are your dreams with Reciclar?

My idea is to **see Reciclar Ltda. turn into a company**, a great company that creates jobs, since there are many people that don't have a place to earn a fixed wage to raise their children.

Manuel Ocón
a leader
Corporación Reciclar Ltda.
Cartagena, Bolivar



I admire people **that strive to grow, go-getters** Manuel



Human beings must be **hard workers**,
if they stall, they are lost **Jair**

Have you always been here in El Salado?

The crops were getting lost and we decided to move here, **to win and lose**, if we are going to get killed, well, let it be, and if not, well... we are not going to starve to death at El Carmen, and we (the men) moved here to plant crops. The women stayed back. In 2005, when we managed to move back here, we began to work and to get settled.

What's the first thing that pops into your mind when you get up?

The first thing I think of **is that history won't repeat itself**, considering what we have gone through, everything now is in harmony. For instance, soccer tournaments are now held here. Men, women and children play soccer here, which is great. Personally, what I think about is to not see history repeat itself.

What do you do?

I do a bit of everything. If I'm needed as a teacher, I'm willing to be one, if I'm needed as a laborer using a machete, I'm there. I'm not embarrassed to do any job, **as long as it is not bad, it doesn't matter.**

What is learning?

To value what we are taught.

What is a hug?

Well, there are two types of hugs. One is when I haven't seen a person for a while and that person feels glad to see me. But for example with my children and with Yura, a hug is different, **it's to feel closer.**

Jair David Capella,
a teacher and laborer
El Salado
Carmen de Bolivar, Bolivar

What is a muleteer?

A muleteer is, for me, **to love mules, to treat them well** and to do my job well. For me, mule transportation is a job that requires a lot of commitment, because if I don't work, nothing is done, and others will fall behind in what they need to do. That's what a muleteer is.

How do you relate to those mules?

Very well, I never punish them. During the years I have been in this job, a male mule died, and **I cried**. We were milling on a Sunday, it was one of the hardest things I have gone through since working here.

How many years have you been a muleteer?

33 years, I began when I was 17.

José Arcadio Ramírez
a muleteer from Bareño
La Avención community business
Village of Bareño, Yolombo, Antioquia



What do you do Arcadio?
I work in agriculture. **I am a muleteer.**
José Arcadio



So the idea is that **you, you and you,**
we all arrive to the same place, and we
all work well and with commitment

Lidia

How have you grown together?

LIDIA

Well, the most difficult part has been learning [...], we were used to selling the onions dirty, just as we picked them out. Instead, giving them added value by cleaning and packing them was hard for a while since we were not used to that. Today **I can offer you an onion that looks good and is clean.**

HERMEN

The association process was difficult as well. Associations are hard since there is a lot of individualism, so when you try to join forces, there's a lot of friction. Early on you don't get along, one wants to do something and the others something else. **Now, we don't have the time to argue.**

LIDIA

Of course now we are seeing profitability. Early on we thought that

it was a waste of time, sitting down to clean an onion.

instead of being in the orchard doing something else.

But now I understand that cleaning them represents more revenue

and now we have learned that having better quality crops creates large chains of jobs, and that demands from us more quality.

What do you all value the most?

LIDIA

What I value the most is time. We devote all of our time, from 6 a.m. we are active, which is great since **before we would be lazy.** Today we don't even have lunch sometimes because we are so passionate. I think that keeping busy is the best thing there is.

Lidia and Hermen Díaz

two brothers and producing partners
San José Association

Village of Buesaquillo, town of San Jose, Nariño

Who taught you to work with molas?

We learn since we are very young, you watch your mom making molas and so you begin to cut fabrics, you can make a mola when you are just ten years old.

Is this particularly made by women or do men make them too?

All of the women work, there are some men that also learn when they are very Young, but they only focus on the geometry, the most elaborate molas are not made by men.

Have you learned many things with this new role as a leader?

Yes, I already have an address, I am asked for molas, now I know how to do business.

Are you also learning about fashion?

Yes, how to use colors.

Is there somebody you enjoy talking to?

I like to talk with people that know many things, that know about crafts, I like to talk with them.

What's growing together for you?

It's like working with another person and you can grow together with that person.

Rosmery Uribe
a leader of the Tule community
Caimán Nuevo, Antioquia



A mola is fabric on fabric,
that you embroider **with a very small needle**
Rosmery

cultural promotion

Initiatives that promote artistic training
and cultural conservation



In Colombia, Panama, El Salvador and
Dominican Republic





Exploring the Heritage

Department of Cundinamarca, Bogota D.C.

Allied Operator
Museo Nacional de Colombia

Subject Population
1,440 children and 160 adults

- Achievements**
- Institutional enhancement of the Museum's education and cultural division
 - Workshops to build ties between the Museum and the children, with 26 entities of the city
 - A total of 195 workshops targeting 1,440 children and 160 assistants
 - Creation of an educational proposals bank related to heritage and its relation with minors
 - Heritage identification, appropriation and comparison through workshops and Museum visits.

Metropolitan Ballet Scholarships

Department of Antioquia, municipality of Medellin

Operator
Asociación Cultural Ballet Metropolitano de Medellín

Subject Population
120 students with scholarships from 12 public schools of the city

- Achievements**
- Provide education forums at 9 public institutions, 7 auditions and award 70 scholarships to students in the year 2014
 - Training scholarship to dancer David Rodríguez in the company Alice Arja of Rio de Janeiro for the I International Ballet Course, and to study at the Miami City Ballet School during 2014.

School Library: A Setting to Be, Create and Build

El Salvador, Panama and Dominican Republic

Allied Operator
Centro Regional para el Fomento del Libro en América Latina y el Caribe - CERLALC

Other Allies
Ministries of Education of each country

Subject Population
150 responsible of school libraries
Education centers, educational directors and coordinators, students, teachers, parents

- Achievements**
- Selection of education institutions and those responsible of school libraries
 - Implementation of stage I of the on-line course for those responsible of libraries.

ToKANDO Scholarships Program

9 departments and 15 municipalities of Colombia

Allied Operator
Fundación Incolmos Yamaha

Subject Population
2,570 boys and girls ages 7 - 14

- Achievements**
- Assessment of program management gave rise to the following finds: Music initiation has influenced different aspects in the development of children and young adults, such as psychological, ethical-moral, social and cognitive.
 - Remarkable increase of: Self-esteem and acknowledgement of the children's life project
 - Enhanced values for co-existence, increased inter-personal relations with classmates and relatives.

feeling

What does feeling mean?

It's like touching something, you can feel it hard or soft, small. **You can also feel with your head, with your feet, with your mouth** Edgar

What else can you feel and where?

EDGAR

Pain, in your head, on your back, in your legs. My body hurts when I lie down.

YINETH

You can feel sadness, hate.

NICOLE

Our body can ache when we don't sleep well. I feel sad for the others.

Why do you like to visit the museum?

EDGAR

To learn new things.

YINETH

To remember the things, what we have already seen.

What did you learn about everything you saw?

EDGAR

I learned to feel and to hear.

Yineth Alejandra

Edgar Santiago

Nicole

8 year olds

several heritage explorers

Museo Nacional de Colombia

Bogota, Cundinamarca

Where does the soul lie in ballet?

The dance is projected through the body, the soul [...]. Transmission is very important, how can you transmit if you don't have experiences[...]. Besides, these turn into a catharsis, and this is very important since it raises you to another level, to pure physical exercise[...]. It's the body that speaks.

What is dancing?

For me, dancing is everything. It's a different state of being. I believe that This is the condition of an artist. There is an obvious experience between the physical being and the physical power. But there's also a convergence of the spirit, of the inner self. Many times you have external aspects that trouble you, but you can let it out with dance, letting the music inspire you, and **that leads you to this condition which is hard to describe.**

Rhythm has enormous variations, but no inner music, you can see this in contemporary dance, or dancing in silence. What you hear from an orchestra, from instruments, there's an inner music, beginning with the heart, that's when you have to listen.

Beatriz Gutiérrez

the director of the Metropolitan School of Ballet
Medellin, Antioquia



It's the body that
speaks

Beatriz



To be able to have
the experience of
feeling

María Camila

Where do you feel the music?

In my entire body.

What's dancing for you?

Dancing is the most basic way of expressing a feeling, it's the joy of being able to develop and to have the experience of feeling.

Why is it important to listen?

Because if we don't listen how can we express ourselves, how can we feel the music and

María Camila
12 years old, a dancer
Medellín, Antioquia

Why is it important to listen?

I think that it is always important, just as Feeling is, because, you know, **how can you dance all cold, without feeling,** one should be inspired, feel things and do them well.

Yulieth
14 years old, a dance
Medellín, Antioquia

What do you feel when you put on a concert?

NILSON

Excitement. My hands shake.

ISABELA

My legs shake.

What do you dream for your life?

NILSON

To be a good musician.

What has music done to your life?

WATER

Every time I play drums, **I feel joy, I feel that I'm fulfilling my dreams.** When we put on concerts and we hear people applauding us, I feel cool.

Walter Alexander

14 years old, 6th grade student

Isabela

13 years old, 8th grade student

Nilson

19 years old, 11th grade student

ToKANDO scholarship program

Cali, Valle del Cauca



Well, the truth is that I began because I didn't like to go home early, I was bored there

Nilson

“Books and the act of reading are the pillars of education, the disclosure of knowledge, the democratization of culture, and the individual and collective growth of human beings”

Unesco

“One of the greatest challenges within the educational systems in Latin America and the Caribbean is to improve the quality of education.

The States, civil societies and private companies see the need to join forces to design and implement activities and policies to provide better education, which is essential to guarantee equitable conditions and inclusion; with increased individual, social and cultural development.”

“Home is where you learn to enjoy reading and writing; children who grow up in settings where books and reading are commonplace have a higher chance of turning into lifelong readers. Moreover, **reading with the family strengthens family ties and relationships.**”

“Libraries and those that serve as literacy mediators in the schools should **promote practices and interactions related to reading and writing,** among students, Teachers, directors and families.”

Fernando Zapata López

Director

Centro Regional para el Fomento del Libro en América Latina y el Caribe - CERLALC-

Bogotá, Cundinamarca

training

for competitiveness

Processes that promote the development of skills among principals, students and teachers, providing answers to the dynamics of the surroundings.



In Colombia





Leading
Transforming
Principals

What does this involve?

The training program enhances the transforming leadership of principals as key factors to improve quality education.

4 departments of Colombia

Allied Operator

Empresarios por la Educación Foundation

Subject Population

336 principals

Achievements

- Evaluation of the pilot and enhancement of the Program’s educational focus
- Coverage expansion to new territorial entities in Colombia
- Design a new phase of the program to enhance the assistance and mobilization of directors which completed their training
- Engaging the educational sector and the secretaries of education to develop the Program

Bilingual
Program for
Competitiveness

6 municipalities and 2 departments of Colombia

What does this involve?

This is a program of institutional assistance provided to schools, with the purpose of enhancing the process to teach a second language, to improve the comprehension and appropriation of students, and to develop professional skills of teachers to achieve changes in their educational practices.

Allied Operators

Universidad del Norte, Universidad Industrial de Santander, Universidad Autónoma de Bucaramanga

Other Allies

Escuela Normal Superior Santa Ana de Baranoa, Escuela Normal Superior Nuestra Señora de Fátima, Escuela Normal Superior de Manatí, Escuela Normal de Bucaramanga, Escuela Normal de Piedecuesta, Escuela Normal de Barrancabermeja
Secretary of Education of Atlántico
Bucaramanga Chamber of Commerce

Subject Population

445 teacher trainees (576 hours trained), 31 teachers (200 hours trained)

Achievements

- Training on specialized education for teachers
- Enhanced communications skills and education foundations for English among students of the complementary cycle
- Cultural exchanges made among students and foreign assistants to build multi-cultural skills
- Provide a coaching workshop with students of the department of Atlántico to encourage them to become English teacher trainees as their life project

Learning

What do people learn from you?

To be calm
Doris

How do you think you will learn?

Preparing myself. There are two ways, first one is to study by myself, which is more difficult since if you do not manage it will take longer, and the second is to resort to an expert who knows and can help you.

How have your experience with the Program been?

The training that the program Rectores Líderes Transformadores (Leading Transforming Principals) gives is particularly different, since it begins by treating you as a human being. It doesn't want to fill you with knowledge and theory, but instead you begin to discover what you need to do and how to do it. They invite you to travel in a world full of contrasts.

Which are your greatest achievements so far?

To admit that we are human beings, and human beings make mistakes, but at the same time we can recognize our faults, overcome our difficulties, and seek support.

What makes you laugh?

Children make me happy. And if you watch them, they laugh and look straight at you, which means you can still work wonders with them. It also saddens me when I look into the eyes of several children who are sad, bitter and angry. When I see that look I think is very hard to help them, their hearts are already closed and they show it in their gaze.

Doris del Carmen Sarama
a principal
Rectores líderes transformadores
Cali, Valle del Cauca

What does planting mean?

BELQUIS

To place seeds and then collect the harvest. In this case with students it means to teach them and see the result at the end.

Why do you like to hug?

BELQUIS

Because a hug reassures you.

AURORA

A hug is part of our own energy, or the energy of the other person we touch, as well. When you hug that energy is exchanged.

What do you deliver in a hug?

BELQUIS

Affection, peace.

What does a smile tell you?

BELQUIS

I think that a smile can be true or fake. **I think that fake smiles can be noticed.** Therefore, smiles tell us if a person is genuine and honest with you.

AURORA

A smile can tell you who the other is.

Why do you laugh? Is it healthy?

BELQUIS

Because it moves 72 muscles.

Some people say, **Don't laugh so much, you will begin to cry.**

Belquis Karel Arrieta
Aurora Esther Bohórquez

English teachers

Bilingual Program for Competitiveness

Manatí, Atlántico



**It's like when you wake-up,
planting means that to me.** Aurora

How do you learn?

First I have to be in the mood. I think this is fundamental, and second to have the proper and suitable persons who can teach me.

And, what do others learn from you?

I think I am one of those persons that can fall a thousand times, stands-up, and not only stand-up –because many stand-up but do not move on– and I think that not only my friends but my students can also learn that we need to move on in life, because **the race goes on.**

Did your mother support you to come to study?

My mother played a fundamental role. My mother is single, I am the daughter of a community mother and the economic support we have is very little. But I believe that we have faced together the situation since this is my dream and she loves when my dreams come true. She says to me, “when you have dreams, you can move on, since human beings died without dreams”.

What are you planting?

I have seeds in my hands... How will I plant them? Every child and every human being has thousands of things, but we have to sick good grounds to plant them and enough fertilizer so that these seeds can grow.

How do you describe a good planting?

Planting consists of three parts: Progress, perseverance and how you want to handle it.

Delma Barraza

a teacher trainee

Bilingual Program for Competitiveness

Manatí, Atlántico



When you have dreams you can move on.
If human beings **don't have dreams**
they die.

Delma

As Principals, are you building a future?

WILSON

I think about farmers –laborers- who have a clear vision about the future. They know they will collect the harvest, but the bottom line is that they live in the present, they do not plant and wait there every single day. They turn their present into action to guarantee that they will reach their goal anytime, this is my theory, and I have focused on improving the people´s present, everything else will fall into place. Certainly if we channel that fertilizer, that harvest, that irrigation the result will be great.

The idea here is that even though the future is clear, things must be done in the present.

Which have been your most important achievements?

MARÍA DEL CARMEN

For me the most important achievement has been the work done to grow as a human being.

WILSON

Mainly to understand the importance of collaborative work,
to understand the need I have first to transform myself.

María del Carmen Murcia

a principal

Wilson Leonel Cajamarca

a principal

Rectores líderes transformadores

Bogotá, Cundinamarca

We lead educational processes, and foremost, an educational process is a process that involves human beings. **María del Carmen**

volunteer corp

The volunteer corp channels the spirit of solidarity of collaborators and families. It's a mechanism of participation which leads to understand the reality, to be part of its transformation, and to encourage the social commitment of the corporate community.



In Colombia*

2.367
volunteers

28.465
Hours of volunteer work

Present in
12
cities

44
Entities involved

COP 381
million
contributed by the
employees to the
Solidarity Fund

* Recognized by the International Association for Volunteer Effort (IAVE), in the category of Full Volunteer Life, as the Best Volunteer Corp of Colombia



These are our volunteers, real people who add knowledge, skills, strengths, time, talent and their essence to build individually, new and collective opportunities without limitations and without boundaries...**just adding the spirit to a universe of possibilities.**

Volunteer Corp

Time to Teach

Advice provided to projects that participate in science, technology and innovation fairs.

Objective

Improve school performance and boost the learning system concepts taught in the classroom, to encourage the desire for research and academia

Number of Volunteers 26

Time to Read

A program which develops reading out loud to children and senior citizens

Objective

Provide affective spaces and recreational amenities for senior citizens that live in low-income homes in the cities of Medellin, Bogota, Barranquilla and Cali; involving reading and storytelling as meaningful experiences that overcome any type of physical and psychological limitation.

Number of Volunteers 113

Time in the Sand

The expressive work with sand is made in groups, in a free and protected setting in which each child creates a world in a sand box with the assistance of an adult volunteer

Objective

To help children boost the process of psychological self-regulation process through their own creative potential

Number of Volunteers 61

Time to Chat

Bilingual volunteers lead conversation groups targeting English teachers from the public sector, to improve their skills in a second language

Objective

To turn Medellin into the most competitive and attractive city for direct foreign investment, which in turn brings out better opportunities for the citizens and local development

Number of Volunteers 13

smiling

What makes you smile?

When you see joy on the face of kids, for instance, when they discover something new or when they are given an award, the happiness they feel, **that not only makes me smile but it also gives me goose bumps,** I think that is beautiful

Fabio

What makes you cry?

When people take advantage of others. I think we should protect these projects so that nobody can steal them from our children, because if they do, they will never turn this into their life project.

What is it like to be a volunteer?

I live for volunteering, I love to investigate, it's very special to me. Children are advancing, they now create projects with foundations, the people of Proantioquia and Parque Explora now provide them several parameters to carry out the projects of the Science Fair, **now the projects' focus is very green, and that is what is sought.**

Fabio Arango

a volunteer of Time to Teach
Medellín, Antioquia



I'm super sentimental and everything makes me cry, seeing somebody else cry or suffer, or somebody worried brings tears to my eyes. **Esteban**

What makes you smile?

The smiles of others.

What drives you to be a volunteer?

The fact of giving so much of something that I have received and sharing that with people that perhaps don't have it.

How do you think trust can be built in a community?

When we put ourselves in their shoes then we can avoid being seen by them as just an English teacher.

Why do you feel privileged?

I feel very privileged because I can walk, I can talk, I can listen, I'm not starving, I have a roof over my head, I have a family, so... what else can we wish for?

Esteban Restrepo
a volunteer of Time to Chat
Medellín, Antioquia

Tell us, what is Time in the Sand?

An activity in which, by using a methodology called expressive work with sand, a child in vulnerable conditions and unconsciously **manages to change part of its reality** or situations which can even hurt him or her during its growth.

It consists of several sessions, in which the children are shown a wet sand box and they are asked to make several constructions with the toys, so they are given the change to build on their own houses, dolls, covers, irregular shapes, the bottom line is that they can build at their free will what they like or feel the need to express. The idea is that there is a volunteer checking and observing what the child does and documents what he or she perceives and what inspires them and what the child does, so each volunteer keeps a record of those perceptions.

The work should be done in an hour or less, the kids don't keep track of time but the volunteer does. When the hour is almost up, the volunteer says to the child, "It's time to finish, you can continue next Saturday."

At the end, when all of the children finish, each volunteer then takes pictures of the box of each construction of child's box and its unavoidable that the other volunteers want to look at the other kid's boxes. The boxes are disassembled afterwards.

¹ Methodology created and developed by the Association for Expressive Sandwork - IAES

Jaime Andrés Díaz

a volunteer of Time in the Sand

Medellín, Antioquia



What is being a volunteer for you?

It's the chance of looking out the window to see what's happening in the world, things that are often unrelated to you, it's like being aware of human reality but not only being aware, participating in it, contributing something which can be simple, or even insignificant, but it turns into something very gratifying when you realize that a result is achieved, such as with Time in the Sand

Jaime



Side by side we can offer them better opportunities, it's not to do the things for others, but instead to be by that person giving support

Claudia

What did you read during the reading activities?

I chose a book of Colombia's history to begin to read with them, **I assumed that a person their age could remember stories and so on.** So I read to them, but I also asked them things to spark A conversation.

Did they tell any stories?

You gradually get to know the stories, how many kids they have, why and for how long they've been there. **We begin to remind them about when they were young and this sparks a conversation.** In fact, I've been several Sundays with them and their families, reading and sharing with the families, I had to do that too, and it seemed really great.

Claudia Camacho
a volunteer of Time to Read
Bogotá, Cundinamarca

Housing fund

The SURA Housing FUND is targeted to the employees of Grupo SURA, Suramericana and its subsidiaries to provide loans with special conditions to buy or improve homes. It extends to the employees of suppliers that provide services to SURA.

The Apostolado de la Aguja Foundation is our allied operator.



In Colombia





“No man, we are not going to rent an apartment, because that’s a risk that we’ll never pay, it will never be ours.”

“O.K., now we have this home, and we have to take care of it because we don’t last forever and you already have a roof, and here my children are real elegant, excellent, my children a really happy here.”

“Now you invest money in a house that is yours and you do it with love, with love i show I do it, here I spend my money, but I’m spending it in my house, and I do it with excitement.”

Horacio Linero

a beneficiary of the Housing Fund
Barranquilla, Atlántico

“I feel joy when I arrive from work and I park my motorcycle there and sometimes I look at the house and I say, “My God, this house i sours. There ’s a huge difference when you say that you are paying rent and when you say that the house is yours.”

“Hope... is to see this house well built, and to work hard to achieve it”.

Ferney Meneses

a beneficiary of the Housing Fund
Cali, Valle del Cauca

More than just a need, I dreamt with a new and comfortable house. **Dora**

When I began to dream, my first dream was a house. I didn't see it as a necessity but rather as a dream, the dream I wanted to come true and I had my entire life: A large house.

When I was told that I was chosen, right away I painted the dream of the house, and more than just the house, look at the view, you can see all of Medellin, you only need to stand on the roof to see the entire city.

With regards to personal growth, **I will not stop dreaming because If I do, then I have nothing to gain and hence, I stopped living.**

Dora Restrepo

a beneficiary of the Housing Fund

Medellin, Antioquia

2013 lessons learned

- During the presentation of proposals of several projects, mistakes were identified in the formulation method used, which in turn hurts the effectiveness of the scope of the projects and the efficiency to meet the results of the project.
- The projects conducted during three or more years, which in turn have empowered communities, require a responsible retirement plan so that they can keep the installed capacity on a long-term basis.
- The association of the experienced learned during the commissioning of the projects must be made regularly, since it is a fundamental exercise for knowledge management, and to project and acknowledge our work.
- Alliance should transcend the sum of interests and resources and focus on collective constructions.
- The long-term continuity of social interventions guarantee strong transformation among people and communities.
- Capitalize those experiences during project development, highlighting the mistakes made in the ties between the company and the community, and the lessons learned which in turn have become opportunities to improve the projects' social management.

2014 challenges

Among the experiences lived in 2013, there are lessons learned which in turn become challenges for the Foundation's management in 2014:

- Consolidation of a methodology to systematize and disclose the experienced learned during the commissioning of the projects of the Foundation and of the Volunteer Corp.
- Develop a proposal of organizational enhancement for the social entities allied.
- Reference strategic allies and social development priorities in the countries where Grupo SURA is present for the international promotion process of Fundación SURA.
- Identify and manage alliance of national and international Cooperation for the Foundation's projects and the Volunteer Corp programs.
- Create new programs and initiatives for the Volunteer Corp in which different players of the Company may participate.

we work together

2013

**Actions that inspire us and puts us
in contact with ourselves, with another,
with others...**

ACARPIN Hogar de Niñez y Juventud • Antioquia le Canta a Colombia • Asociación Cultural Ballet Metropolitano • Asociación Cultural El Nido • Asociación de Amigos • Voluntarios del Museo de Jericó • Asociación Medellín Cultural • Ballet Folclórico de Antioquia • Ballet Nacional el Firulete • Batuta Caldas • Batuta Huila • Batuta Meta • Biblioteca Departamental Jorge Garcés • Biblioteca Pública Piloto • Biomuseo Panamá • Cámara de Comercio de Bucaramanga • Casa Religiosa Siervas de Jesús • Casita de Nicolás • CECODES • Centro de Bienestar al Anciano de Fredonia • Centro de Historia de Jericó • Centro Regional para el Fomento del Libro en América Latina y el Caribe – CERLALC – • Club Fotográfico de Medellín • Colegio San Lucas • Colfuturo • COLSALUD • CORPAUL • CORPOAYAPEL • Corporación Amigos con Calor Humano • Corporación Amigos del Arte de Marinilla • Corporación Antioquia Presente • Corporación Artística Canto y Vida • Corporación Colombia Internacional • Connect Bogotá Región • Corporación Cultural Gustavo Matamoros • Corporación • Cultural Nuestra Gente • Corporación Display • Corporación Ecológica y Educativa Ultramar • Corporación El Trailer • Corporación Empresarial del Oriente Antioqueño • Corporación Excelencia en la Justicia • Corporación Fomento de la Música • Corporación Futuro para la Niñez • Corporación Juntos Construyendo Futuro • Corporación Mahavir Kmina • Corporación Minuto de Dios • Corporación Parque Explora • Corporación Red del Pacto Global • Corporación Sembrando en Familia • Corporación Superarse • Corporación Transparencia por Colombia • Corporación Vallenpaz • Corporación Ventures • Escuela Distrital Jesús Misericordioso • Escuela Normal Superior del Magdalena Medio • Fundación Amigos del Parque Explora • Fundación Apostolado de La Aguja • Fundación Centro de Documentación Musical Notas y Partituras • Fundación Circo Momo • Fundación Colombiana de Rotarios • Fundación Cottolengo del Padre Ocampo • Fundación Dividendo por Colombia • Fundación Educación para la Democracia y la Paz • Fundación El Cinco • Fundación Empresarios por la Educación • Fundación Enrique Grau Araujo • Fundación Espavé • Fundación Esperanza para ver • Fundación Fondo Social de la Andi • Fundación Fraternidad Medellín • Fundación Ideas para la Paz • Fundación Incolmotos Yamaha • Fundación Integrar • Fundación Juan Felipe Gómez Escobar • Fundación Juan Luis Londoño de la Cuesta • Fundación La Mano Amiga del Recluso • Fundación la Purnia Campesina • Fundación Las Golondrinas • Fundación Luisa Fernanda Síndrome de Down • Fundación Mariana Pro Fibrosis Quística • Fundación Niños Acordeoneros y Cantores del Vallenato • Fundación Nutresa • Fundación Nutrir Manizales • Fundación para Ayuda a los Cadis • Fundación para la Educación Especializada • Fundación Proantioquia • Fundación Prolífica de Antioquia • Fundación Providencia 2000 • Fundación Secretos para Contar • Fundación Sirenaica • Fundación Solidaridad por Colombia • Fundación Taller de Letras • Fundación Teatro Interno • Fundación Teatro Pablo Tobón Uribe • Fundación Teletón • Fundación Universitaria Bellas Artes • Fundación Ximena Rico Llano • FUNDASEG • FUNMUSICA • Grupo Interdisciplinario por los Derechos Humanos • INSOVIVIENDA • Institución Educativa Inmaculada Concepción • Instituto de Capacitación los Álamos • Instituto Musical Diego Echavarría • Manos Unidas por Colombia • Museo de Antioquia • Museo de Arte Moderno de Barranquilla • Museo de Arte Moderno de Bucaramanga • Museo de Arte Moderno de Medellín • Museo La Tertulia • Museo Nacional de Colombia • Orquesta Filarmónica de Medellín • RECIMED • Siervas de María Ministra de los Enfermos • Sodexo • Tecnomédica • Universidad de Antioquia • Universidad de los Andes • Universidad EAFIT • Universidad Nacional de Colombia

financial statements

STATUTORY AUDITOR'S REPORT

To the **Board of Directors** of Fundación Suramericana:

STATUTORY AUDITOR'S REPORT

To the Board of Directors of Fundación Suramericana:

I have audited the financial statements of Fundación Suramericana (the "Foundation"), which comprise the statements of financial position as of December 31, 2013 and 2012, and the income statements for the years then ended and the related notes to the financial statements, which include a summary of the significant accounting policies and other explanatory information.

Management is responsible for the preparation and fair presentation of these financial statements in accordance with accounting principles general accepted in Colombia; this includes the design, implementation, and maintenance of internal control relevant to the preparation and fair presentation of financial statements that are free from material misstatement, whether due to fraud or error; and the selection and application of proper accounting principles, and to establish appropriateness of accounting policies used and the reasonableness of accounting estimates made by management.

My responsibility is to express an opinion on these financial statements based on my audits. I conducted my audits in accordance with auditing standards generally accepted in Colombia. Those standards require meeting ethical requirements, and to plan and perform the audit to obtain reasonable assurance about whether the financial statements are free from material misstatement.

An audit involves performing procedures to obtain audit evidence about the amounts and disclosures in the financial statements. The procedures selected depend on the auditor's judgment, including the assessment of the risks of material misstatement of the financial statements. In making those risk assessments, the auditor considers internal control relevant to the preparation and fair presentation of the financial statements in order to design audit procedures that are appropriate in the circumstances. An audit

also includes evaluating the appropriateness of accounting policies used and the reasonableness of significant accounting estimates made by management, as well as evaluating the overall presentation of the financial statements. I believe that the audit evidence I have obtained is sufficient and appropriate to provide a basis for my audit opinion below.

In my opinion, the financial statements referred to above, taken from the books and attachments herein, provide fairly, in all material respects, the financial position of the Foundation as of December 31, 2013 and 2012, and the results of its operations then ended in accordance with accounting principles generally accepted in Colombia. Based on the result of my audits, in my opinion:

- a) The Foundation's accounting has been kept in accordance with the legal standards and the accounting technique.
- b) The operations recorded in the books and management actions meet the bylaws and the decisions of the Board of Directors.
- c) The communications, vouchers and book of minutes are kept and conserved in proper form.
- d) There are proper internal control measures for the conservation and custody of the goods of the Foundation and of third parties in its power.
- e) The financial statements herein and the report prepared by management match.
- f) The information contained in the integrated social security contributions statements, particularly of affiliates and of their base quote income, has been taken from the records and accounting supports. The Foundation is not late in terms of payments to the integrated social security contributions..

Karen Castaño Gutiérrez
Statutory Auditor of Fundación Suramericana
Professional Card 157513 - T
Member of KPMG Ltda.

March 3, 2014
aportes al sistema de seguridad social integral.

Balance Sheet

DECEMBER 31, 2013 AND 2012 (FIGURES IN THOUSANDS OF COLOMBIAN PESOS)

Asset	2013	2012
Current Asset:		
	\$	
Cash available (Note 3)	4,923,321	1,318,174
Accounts receivable, net (Note 4)	218,539	327,237
Negotiable obligations (Note 5))	47,417,076	75,780,604
Total Current Asset	52,558,936	77,426,015
Long-term Asset:		
Permanent investments, net (Note 5)	81,395,157	56,568,396
Property and equipment	6,181	4,887
Appreciations (de-appreciations), net (Note 6)	(6,528,329)	3,337,415
Total Long-term Asset	74,873,009	59,910,698
Total Asset	\$ 127,431,945	137,336,713
Liability and Equity		
Current Liability:		
Suppliers (Note 7)	506,995	-
Accounts payable (Note 8)	54,827	15,905
Labor obligations (Note 9)		
Financial obligations	48,224	29,146
Total Current Liability	610,046	45,051
Long-term liability – Prepayments and advances	8,290	8,290
Total Liability	618,336	53,341
Equity		
Social security contributions (Note 10)	1,929,751	1,929,751
Reserve for permanent allocation (Note 11)	132,016,206	125,410,380
Surplus (deficit) for appreciations (Note 6)	(6,528,329)	3,337,415
Results of the period	(604,019)	6,605,826
Total Equity	126,813,609	137,283,372
Total Liability and Equity	\$ 127,431,945	137,336,713

See notes to financial statements.

ORIGINAL SIGNED:
Luz Marina Velásquez
Legal Representative

ORIGINAL SIGNED:
Luis Fernando Soto Salazar
Accountant
Professional Card 16951 - T

ORIGINAL SIGNED:
Karen Castaño Gutiérrez
Statutory Auditor
Professional Card 157513 - T
Member of KPMG Ltda.
(See my report dated March 3, 2014)

FUNDACIÓN SURAMERICANA

INCOME STATEMENT

For the years ended December 31, 2013 and 2012 (figures in thousands of Colombian pesos)

	2013	2012
Operating income:		
Donations (Note 13)	7,282,282	9,045,406
Operating expenses (Note 14):		
Donations	10,236,921	9,563,231
Personnel expenses	457,902	363,420
Fees	2,577,985	906,415
Contributions and affiliations	75,509	64,251
Travelling expenses	132,991	17,278
Services	123,938	428,525
Maintenance, adaptation and installation	50,618	-
Provisions (Note 4 and 5)	1,567,529	-
Other administrative expenses (Note 15)	1,951,705	161,856
Total Operating Expenses	17,175,098	11,504,976
Operating Result	(9,892,816)	(2,459,570)
Non-operating Income (expenses), net:		
Sale of investments (Note 13)	3,852,498	5,502,976
Dividends (Note 13)	1,565,439	1,237,072
Interests for investments (Note 13)	3,587,888	3,078,588
Utilizations	52,128	77,192
Valuation	651,696	60,165
Financial expenses	(409,682)	(396,776)
Miscellaneous	(11,170)	(493,821)
Total Non-operating Income, net	9,288,797	9,065,396
Net Result	\$ (604,019)	6,605,826

See notes to financial statements.

ORIGINAL SIGNED:
Luz Marina Velásquez
Legal Representative

ORIGINAL SIGNED:
Luis Fernando Soto Salazar
Accountant
Professional Card 16951 - T

ORIGINAL SIGNED:
Karen Castaño Gutiérrez
Statutory Auditor
Professional Card 157513 - T
Member of KPMG Ltda.
(See my report dated March 3, 2014)

notes to financial statements

FUNDACIÓN SURAMERICANA

INCOME STATEMENT

For the years ended December 31, 2013 and 2012 (figures in thousands of Colombian pesos)

(1) Corporate Purpose

Fundación Suramericana was established through public deed Nr. 281 of August 2, 1971 of the Governor's Office of Antioquia, and registered at the Medellin Chamber of Commerce on March 4, 1997, in book 1, under Nr. 1048; with an indefinite legal term.

The Foundation's purpose is to help improve the social, educational, civic and cultural conditions, and the overall wellbeing of the people; seeking the means and methods conducive to this purpose either on its own or in collaboration or connection with other entities or people devoted to community service in Colombia or from overseas. In compliance with its purpose the Foundation may acquire and sell any certificate, corporate interest or shares in corporation of any nature, and overall, perform the duties and execute the activities or enter civil, commercial or labor agreements construed necessary or conducive to meet its purpose pursuant to the laws of the Republic of Colombia.

As of December 31, 2013, the Foundation had 9 employees and carried out its activities through a main office.

(2) Summary of Significant Accounting Policies

(a) (a) Basis for Preparation and Presentation

The Foundation's financial statements have been prepared in accordance with accounting principles generally accepted in Colombia. Pursuant to Decree 1878 of 2008, the basic financial statements of non-commercial entities are solely obliged to present the balance sheet and the income statement.

(b) Materiality or Relative Importance Approach

Economic events are acknowledge and presented pursuant to their relative importance. The materiality to prepare the financial statements was determined regarding total current assets and liabilities, total assets and liabilities, working capital, equity, or the results of the period, whichever the case.

As a general rule, the approach followed was 5% of the total value of assets and operating income.

FUNDACIÓN SURAMERICANA

NOTES TO FINANCIAL STATEMENTS

(a) Use of Estimates

Preparing the financial statements, in accordance with the generally accepted accounting principles of Colombia, required the Foundation's management to record estimates and provisions that affect the values of assets and liabilities reports, and to disclose contingent assets and liabilities to the date of the financial statements. Real results may differ from the estimates.

(b) Investments

Investments are recorded at their cost, which does not exceed market value.

(c) Appreciation and Deappreciationo

Corresponds to the appreciation of permanent investments of corporations not controlled. This corresponds to the excess of its intrinsic value over its cost in books, and is recorded in the item of appreciations and credited to surplus for appreciations. If the intrinsic value is lower than the cost in books, the difference initially affects the appreciation and its surplus up to its amount, if any; if higher, it represents a deappreciation, which affects the items above mentioned with a lower value, notwithstanding if their net balance has an opposite nature.

(d) Properties and equipment

Properties and equipment are recorded at their acquisition cost. Depreciation is calculated by the straight line method based on the estimated life of each asset. The estimated life of computer equipment is 5 years

(e) Taxes, Liens and Encumbrances

Income Tax

The income tax expense is determined based on the fiscal income at a 20% rate since the Foundation is a taxpayer under the Special Tax Regime.

(f) Revenues and Expenses Acknowledged

Revenues and expenses are acknowledged when the right to them arises; expenses are acknowledged by the causation system. Donations are recorded on the income statement.

(3) Cash Available

The following shows the cash available as of December 31::

	2013	2012
Banks Colombian currency	\$ 1,291,050	1,308,368
Savings accounts	3,632,254	9,506
General cash available	17	300
	<u>\$ 4,923,321</u>	<u>1,318,174</u>

Cash available is free of restrictions or liens

(4) Accounts Receivables

The following shows the accounts receivable at December 31:

	2013	2012
Commercial checking accounts	\$ 501,200	156,329
Advanced payment taxes	218,539	170,908
Provision for doubtful accounts	(501,200)	-
	<u>\$ 218,539</u>	<u>327,237</u>

The following shows the movement of the provision for doubtful accounts during the year 2013:

	2013
Initial balance	\$ -
Provision of the year	567,529
Recovery of provisions	(66,329)
Final balance	<u>\$ 501,200</u>

(5) Investments

The following shows the balance of investments as of December 31:

	2013	2012
Negotiable (1)	\$ 47,417,076	75,780,604
Permanent, non-controlling (2)	82,395,157	56,568,396
Provision of investments (3)	(1,000,000)	-
Total non-controlling permanent	<u>81,395,157</u>	<u>56,568,396</u>
	<u>\$ 128,812,233</u>	<u>132,349,000</u>

(1) The following shows negotiable investments as of December 31:

	2013	2012
Grupo Sura S.A. – Bonos	5,027,043	5,045,614
Valores Bancolombia S.A.- BOCEAS	26,670,185	57,095,118
Bancolombia S.A. - CDT	1,499,726	-
Leasing Bancolombia S.A. - CDT	2,005,475	-
Fondo de Valores Surenta	299	291
Fiduciaria Bancolombia S.A. – Bareño	38,261	41,632
Fiduciaria Bancolombia S.A.– Sodexo	18,945	18,427
Fiduciaria Bancolombia S.A. - Fondo abierto	1,046,605	1,031,931
BTG Pactual S.A.	3,962,528	3,730,532
Profesionales de Bolsa S.A.	2,359,431	2,103,490
Valores Bancolombia S.A. - Encargos	2,673,170	-
Valores Bancolombia S.A. - Derechos de recompra	2,115,409	-
	<u>\$ 47,417,076</u>	<u>75,780,604</u>

(2) The following table shows non-controlling permanent investments as of December 31:

2013			
Entity	Number of Shares	Activity	Balance
Ecopetrol S.A.	600,000	Explotación	\$ 3,127,823
Cemento Argos S.A.	100,000	Explotación	763,739
Preferencial Cemento Argos	20,000	Explotación	175,304
Enka de Colombia S.A.	100,000,000	Manufacturera	880,814
Carvajal S.A.	754,716	Manufacturera	3,999,995
Construcciones El Cóndor S.A.	1,450,000	Construcción	1,838,444
Constructora Conconcreto S.A.	1,007,849	Construcción	1,383,590
Constructora Portobello S.A.	10,000	Construcción	18,183
Constructora Monticello S.A.	144	Construcción	144
ISA S.A. E.S.P.	151,000	Electricidad	1,719,760
Celsia S.A.	600,947	Electricidad	3,087,874
Grupo Sura Preferencial	1,100,000	Financiero	42,780,460
Grupo de Inversiones Suramericana S.A.	140,001	Financiero	3,549,750
Bancolombia S.A.	405,638	Financiero	11,277,548
Bancolombia Preferencial	126,303	Financiero	3,290,168
Grupo Nutresa S.A.	85,000	Financiero	2,014,981
Protección S.A.	12,434	Seguridad Social	668,304
Suramericana S.A.	1	Financiero	1
Enlace Operativo S.A.	1	Servicios	688
Tablemac S.A.	81,030,807	Otros	817,580
Productos del Bosque Naidí S.A.S	54,500	Otros	1,000,000
Sodexo Soluciones de Motivación	1	Otros	6
			<u>\$ 82,395,157</u>

2012			
Entity	Number of Shares	Activity	Balance
Ecopetrol S.A.	300,000	Energético	\$ 1,586,685
Enka de Colombia S.A.	100,000,000	Manufactura	880,814
Carvajal S.A.	754,716	Manufactura	3,999,995
Constructora El Cóndor S.A.	1,450,000	Construcción	1,796,912
Constructora Conconcreto S.A.	548,725	Construcción	740,779
ISA S.A. E.S.P.	151,000	Electricidad	1,719,760
Empresa Energía de Bogotá S.A. E.S.P.	850,000	Electricidad	1,103,206
Grupo de Inversiones Suramericana S.A.	704,512	Financiera	22,787,342
Grupo Sura Preferencial	100,000	Financiera	3,251,578
Sura Asset Management S.A.	7	Financiera	18,585
Bancolombia S.A.	500,000	Financiera	14,002,161
Protección S.A.	12,434	Seguridad social	668,304
Fondo Bursátil ICOLCAP S.A.	120,000	Financiera	2,080,304
Bolsa de Valores de Colombia S.A.	3,000,000	Financiera	95,370
Enlace Operativo S.A.	1	Servicios	688
Constructora Portobello S.A.	10,000	Construcción	18,183
Constructora Monticello S.A.	144	Construcción	144
Tablemac S.A.	81,030,807	Manufactura	817,580
Productos del Bosque Naidí S.A.S	54,500	Manufactura	1,000,000
Sodexo Soluciones de Motivación Colombia	1	Servicios	6
			<u>\$ 56,568,396</u>

(3) The provision of investments corresponds to Bosques Naidí, which is currently in liquidation process

(6) Appreciation

The following table details appreciations and de-appreciations as of December 31:

Entity	Cost	Realization Value	Appreciation / De-appreciation
Ecopetrol S.A.	3,127,823	2,361,134	(766,689)
Cemento Argos S.A.	763,739	919,057	155,318
Cementos Argos S.A. Preferencial	175,304	181,022	5,718
Enka de Colombia S.A.	880,814	796,000	(84,814)
Carvajal S.A.	3,999,995	2,866,827	(1,133,168)
Construcciones El Cóndor S.A.	1,838,444	1,926,616	88,171
Conconcreto S.A.	1,383,590	1,371,563	(12,029)
Constructora Portobello S.A.	18,183	-	(18,184)
Constructora Monticello S.A.	144	-	(144)
ISA S.A.	1,719,760	1,343,107	(376,653)
Celsia S.A.	3,087,874	3,379,317	291,443
Grupode Inversiones Suramericana S.A.	42,780,460	38,940,968	(3,839,492)
Preferencial Grupo de Inversiones Suramericana S.A.	3,549,750	4,805,695	1,255,945
Bancolombia S.A.	11,277,548	9,601,500	(1,676,047)
Bancolombia S.A. Preferencial	3,290,168	3,022,951	(267,217)
Grupo Nutresa S.A.	2,014,981	2,218,578	203,597
Protección S.A.	668,304	479,393	(188,911)
Suramericana S.A.	1	14,697	14,696
Enlace Operativo S.A.	688	688	-
Tablemac S.A.	817,580	637712	(179,868)
Productos del Bosque Naidí S.A.S	1,000,000	1,000,000	-
Sodexo Soluciones de Motivación	6	6	-
	\$ 82,395,157	75,866,829	(6,528,329)

Entity	2012		
	Cost	Realization Value	Appreciation / De-appreciation
Ecopetrol S.A.	\$ 1,586,685	1,595,604	8,919
Enka de Colombia S.A.	880,814	802,000	(78,814)
Carvajal S.A.	3,999,995	3,760,259	(239,736)
Construcciones El Cóndor S.A.	1,796,912	2,160,587	363,675
Constructora Conconcreto S.A.	740,779	712,086	(28,693)
ISA S.A. E.S.P.	1,719,760	1,463,388	(256,372)
Empresa Energía de Bogotá S.A.	1,103,206	1,105,281	2,075
Grupo de Inversiones Suramericana S.A.	22,787,342	25,452,736	2,665,394
Grupo Sura S.A. Preferencial	3,251,578	3,754,690	503,112
Sura Asset Management S.A.	18,585	19,091	506
Bancolombia S.A.	14,002,161	14,572,785	570,624
Protección S.A.	668,304	417,285	(251,019)
Suramericana S.A.	-	14,697	14,696
Fondo Bursátil Icolcap S.A.	2,080,304	2,174,132	93,828
Bolsa de Valores de Colombia S.A.	95,370	86,040	(9,330)
Enlace Operativo S.A.	688	688	-
Constructora Portobello S.A.	18,183	-	(18,183)
Constructora Monticello S.A.	144	-	(144)
Tablemac S.A.	817,580	811,929	(5,651)
Productos del Bosque Naidí S.A.S	1,000,000	1,002,530	2,530
Sodexo Soluciones de Motivación	6	4	(2)
	\$ 56,568,396	59,905,812	3,337,415

(7) Suppliers

The following table shows accounts payable to suppliers as of December 31, 2013:

Third Parties	Balance
CERLALC Centro Regional para el Fomento del Libro en América Latina y el Caribe	373,555
Sodexo Soluciones De Motivación	79,961
Fundación Taller De Lectura Jordi	19,194
Netw Consulting	12,375
Fundación Ximena Rico	10,000
Elkin Adrián Franco	6,629
Transportes de Alto Nivel	2,715
Dairo De Jesus Urrea	922
Marion S.A.	648
Miguel Alexander Castillo	368
Aristobulo Larrota	355
AM Mensajes S.A.S	134
María Ximena Ocampo	100
Otros Inferiores a 50 mil pesos	39
	<u>\$ 506,995</u>

(8) Accounts Payable

The following table shows accounts payable as of December 31:

	2013	2012
Withholding at source	\$ 29,335	9,784
Withholdings and contributions to payroll	25,492	4,492
Others	-	1,629
	<u>\$ 54,827</u>	<u>15,905</u>

(9) Labor Obligations

The following table shows labor obligations as of December 31:

	2013	2012
Wages payable	\$ 2,580	-
Consolidated fringe benefits	18,978	14,469
Interests over fringe benefits	2,195	1,610
Consolidated vacations	15,363	8,941
Extra legal benefits	9,108	4,126
	<u>\$ 48,224</u>	<u>29,146</u>

(10) Estimated Liabilities and Provisionss

No estimated liabilities and provisions are held as of December 31, 2013

(11) Social Contributions

Social contributions correspond to the amount contributed by founding members to establish Fundación Suramericana.

(12) Reserve for Permanent Assignment

This reserve involves the surplus from prior years with which the Foundation may invest in real estate or rights, with the purpose of using the yields for the ongoing maintenance or development of several activities derived from its corporate purpose.

(13) Income Tax

- i) The following table shows the conciliation between deficit before income tax and the estimated fiscal loss of years ended December 31:

	2013	2012
Results before income tax	\$ (604,019)	6,605,826
Plus:		
Loss from sale of investments	15,876	90,364
Encumbrance financial movements	33,372	48,188
Provision	1,567,529	-
Non-regular donations	145,325	75,744
Other miscellaneous expenses	21,682	819
Minus:		
Non-taxed dividends	(1,565,439)	(1,232,301)
Profit in sale of investments	(3,868,374)	(5,593,340)
Total cash and short term receivables loss	<u>\$ (4,254,048)</u>	<u>(4,700)</u>

As a result of the income analysis process, a loss of cash and short term receivables was displayed and hence, there is no place for the liquidation of the income tax, keeping in mind as well that, in accordance with article 191 of the Tax Law, entities that contribute to the Special Tax Regime are excluded from determining taxes under the presumptive income system.

- i) The following table shows the conciliation between accounting and fiscal equity for the years ended December 31:

	2013	2012
Equity	\$ 126,813,608	137,283,372
Plus: Items that increase equity for fiscal effects:		
Fiscal cost of investments in shares	80,213,282	49,395,514
Appreciations	6,528,329	-
Provisions, investments	1,000,000	-
Provisions, loans	501,200	-
Minus: Items that decrease equity for fiscal effects:		
Cost of investments in shares	(82,395,157)	(56,568,396)
Appreciations	-	(3,337,415)
Fiscal equity	<u>\$ 132,661,262</u>	<u>126,773,075</u>

(14) Revenues

The following table shows revenues of years ended December 31:

	2013	2012
Operating		
Donations (1)	<u>\$ 7,282,282</u>	<u>9,045,406</u>
Non-operating		
Sale of investments (net) (2)	3,852,498	5,502,976
Dividends (3)	1,565,439	1,237,072
Interests from investments	3,587,887	3,078,588
Valuation	651,696	60,165
Difference in exchange rate	10,511	-
Utilizations	52,128	77,192
	<u>\$ 9,720,159</u>	<u>9,955,993</u>

- (1) The following table shows donations received in years ended December 31:

Entity	2013	2012
Grupo de Inversiones Suramericana S.A	\$ 4,000,000	5,000,148
Servicios Generales Suramericana S.A.S	3,000,000	2,000,190
Suramericana S.A.	200,000	200,250
EPS y Medicina Prepagada Suramericana S.A.	-	51,960
Seguros de Riesgos Laborales Suramericana S.A.	-	252,590
Seguros Generales Suramericana S.A.	-	1,253,178
Seguros de Vida Suramericana S.A.	-	253,707
Fundación Argos	36,693	-
Otros inferiores a \$30 millones	45,589	33,383
	<u>\$ 7,282,282</u>	<u>9,045,406</u>

FUNDACIÓN SURAMERICANA

NOTAS A LOS ESTADOS FINANCIEROS

(2) The following table shows sale of investments as of December 31:

Entity	2013	2012
Grupo de Inversiones Suramericana S.A - neto	2,641,661	1,582,079
Cementos Argos S.A.	310,550	-
Bancolombia S.A. - neto	274,203	580,006
Empresas Energía Bogota S.A. E.S.P.	137,301	-
Grupo Nutresa S.A.	123,474	(474,714)
Construcciones El Cóndor S.A.	123,388	-
Celsia S.A.	106,498	-
Fondo Bursátil Icolcap S.A.	55,274	-
Cementos Argos S.A.	53,291	-
Ecopetrol S.A.	23,342	-
Inversiones Argos S.A.	2,886	3,207,935
Bolsa de Valores de Colombia S.A.	630	19,902
Valores Bancolombia S.A.	-	13,129
Tablemac S.A.	-	150,480
Isagen S.A. ESP	-	136,730
ISA S.A. ESP	-	(46,641)
Banco Davivienda S.A.	-	334,070
	\$ 3,852,498	5,502,976

FUNDACIÓN SURAMERICANA

NOTES TO FINANCIAL STATEMENTS

(3) The following shows dividends received as of December 31:

Entity	2013	2012
Grupo de Inversiones Suramericana S.A.	721,239	392,729
Bancolombia S.A.	310,673	501,681
Ecopetrol S.A.	174,600	-
Carvajal S.A.	113,207	-
Empresa de Energía de Bogotá S.A. E.S.P.	43,960	-
Celsia S.A. E.S.P.	31,960	-
Construcciones El Cóndor S.A.	28,933	13,600
ISA E.S.P.	28,388	25,955
Cititrust Colombia S.A.	24,000	-
Cementos Argos S.A.	23,329	-
Protección S.A.	22,220	400
Constructora Concreto S.A.	20,000	-
Grupo Nutresa S.A.	12,879	43,200
Tablemac S.A.	8,103	11,862
Suramericana S.A.	1,459	439
Seguros de Vida Suramericana S.A.	224	60
Compuredes S.A.	188	-
Seguros de Riesgos Laborales Sura	73	23
Sodexo Soluciones de Motivación S.A.	4	-
Valores Bancolombia S.A.	-	1,945
Bolsa de Valores de Colombia S.A.	-	4,560
Banco Davivienda S.A.	-	30,800
Grupo Argos S.A.	-	156,937
Fondo Bursátil Icolcap S.A.	-	2,400
Isagen S.A. E.S.P.	-	50,481
	\$ 1,565,439	1,237,072

(4) The following table shows interests received from investments as of December 31:

Entity	2013	2012
Valores Bancolombia S.A.	1,415,302	2,135,426
Tuya S.A.	31,161	36,324
Bancolombia S.A.	222,621	68,586
Fondo de Valores Surenta	259,673	16
Profesionales de Bolsa S.A.	23,232	89,868
Surenta Fondo de Valores	9	-
Grupo de Inversiones Suramericana S.A.	258,203	428,044
Banco de Bogotá S.A.	22,983	-
Leasing Bancolombia S.A.	25,910	-
Cementos Argos S.A.	4,167	-
Grupo Argos S.A.	1,065,723	-
BTG Pactual S.A.	233,344	314,484
Factoring Bancolombia S.A.	25,560	-
ISA E.S.P.	-	5,375
Construcciones El Condor S.A	-	465
	<u>\$ 3,587,888</u>	<u>3,078,588</u>

(14) Operating Expenses

The following table shows donations made during the years ended December 31:

2013	
Third Parties	Amount
Fundación Apostolado La Aguja	2,456,000
Fundación Empresarios por la Educación	2,148,000
Cámara de Comercio de Bucaramanga	500,000
Fundación para el Futuro de Colombia	400,000
Corporación Colombia Internacional	350,000
Fundación Proantioquia	225,000
Asociación Amigos de Museo Nacional	230,000
Fundación Espave	200,000
Corporación Vallenpaz	200,000
Fundación Incolmotos Yamaha	200,000
Corporación Parque Explora	150,000
Corporación Museo de Arte Moderno	125,000
Museo de Antioquia	125,000
Corporación Futuro para la Niñez	115,000
Fundación Amador Biomuseo Panamá	106,425
Fundación Teletón	100,000
Fundación el Cinco	100,000
Fundación Las Golondrinas	100,000
Otros Inferiores a 100 millones	2,406,496
	<u>\$ 10,236,921</u>

2012

Third Parties	Amount
Fundación Apostolado La Aguja	1,684,000
Centro Colombo Americano de Medellin	1,000,000
Fundación Empresarios por la educación	683,000
Colfuturo	400,000
Corporación Colombia Internacional	350,000
Universidad Del Norte	330,000
Fundación Dividendo Por Colombia	290,644
Corporación Vallenpaz	270,000
Fundación El Cinco	260,000
Fundación Centro de fe y culturas	205,000
Corporación Nariño Empresa y Futuro	200,000
Fundación para el desarrollo de los Llanos	200,000
Corporación Futuro para La Niñez	172,700
Proantioquia	168,000
Fundación Estructurar	150,000
Fundación Espave	150,000
Fundación Incolmotos Yamaha	150,000
Fundación Amador	109,529
Fundación Nacional para el desarrollo, el arte y la cultura	100,000
Federación Nacional de Cafeteros De Colombia	100,000
Corporación Museo de Arte Moderno	100,000
Fundación Semana	100,000
Federación de Productores de Cacao del Sur del Tolima	100,000
Otros Inferiores A 100 Millones	2,290,358
	9,563,231

The following table shows fees of years ended December 31:

	2013	2012
Statutory audit	8,294	6,090
Consultancy services	-	46,400
Counseling (1)	2,569,083	850,567
Others	608	3,358
	\$ 2,577,985	906,415

1) The following shows fees for counseling as of December 31

	2013
Third Party	Balance
Corporación Juntos Construyendo Futuro	1,229,312
CERLALC - Centro Regional para el Fomento del Libro	778,332
Cecilia Duque Duque	70,000
Fundación Catalina Muñoz	65,550
Fuzionia S.A.S	60,900
María Claudia Munevar	53,912
Fundación Taller de Lectura Jordi	47,985
Corporación de Amor al Niño Cariño	30,425
Innova Brands S.A.S	24,864
Francisco Javier Avalo	22,169
Julio César Calderón	18,577
Marquillas S.A.	16,950
Corporación Empresarial	15,977
Cincel S.A.S.	15,663
Netw Consulting	12,760
Elkin Adrián Franco	11,532
Ana María Tamayo Velásquez	10,923
Juan Sebastian Velasco	10,500

Vitalius S.A.S.	10,440
Suma Social Consultores	9,747
Eco producciones BTL	9,409
Compañía de Jesús	8,510
Corporación Redeamérica	8,208
Gonzalo Alberto Rios	6,750
Carolina María Uribe	5,740
Dividendo por Colombia	5,046
Sebastian Azicri Domínguez	4,110
Mariela Duque	1,980
Fundación New Life System	1,295
Carolina de los Rios	934
María Eugenia Uribe	350
Contacto Arquitectura	235
	<u><u>2,569,085</u></u>

2012

Third Parties	Balance
Corporación Juntos Construyendo Futuro	568,337
Corporación de Amor Al Niño Cariño	241,454
Fundación Letra Viva	20,000
Grupo Consultoría Transformación Organizacional	15,439
Corporación Empresarial del Oriente Antioqueño	5,337
	<u><u>850,567</u></u>

(15) Other Administration Expenses

The following table shows other administrative expenses as of December 31:

	2013	2012
Representation expenses	399,188	71,905
Housekeeping and cafeteria	4,306	-
Supplies and stationary	74,278	1,464
Cab and bus fare	-	20,693
Restaurants	5,548	621
Others (1)	1,463,410	51,022
Depreciations	1,097	313
Other insurance	3,878	-
Legal expenses	-	6,929
On-site repairs	-	8,909
	<u><u>\$ 1,951,705</u></u>	<u><u>161,856</u></u>

(1) The following table shows Others as of December 31:

2013

Third Parties	Balance
Lamiter S.A.	1,405,920
Mexitex E.U.	34,535
Almacenes Éxito S.A.	98
Antonio María Acevedo	12,600
Uniples S.A.	9,569
Otros	688
	<u><u>1,463,410</u></u>

2012

Third Party	Balance
Mexitex E.U.	10,481
Electropilas y Cia Ltda.	9,487
Cesar Augusto Correa López	8,602
Oscar Andres Seoneray	7,000
Edgar Javier Quevedo Buitrago	3,933
Luis Alberto Grisales Perez	2,352
Marco Andrés Jaramillo Ortiz	1,800
Seguros de Vida Suramericana S.A.	1,717
Ducón S.A.	1,121
Dropopular S.A.	1,051
Otros Inferiores a 1 millón de pesos	3,477
	<u>51,021</u>



This book was printed in Colombia. The productive process involved the use of the latest generation inks; sizes were optimized to minimize waste and raw materials were separated to be reprocessed or properly disposed of.

Prints are FSC certified in the chain of custody which guarantees that the paper used in this report comes from controlled forests and that its custody was made during the process. This certification reflects the commitment of everybody involved in this book for the conservation of forests worldwide and the preservation of the environment. For more information, visit: www.fsc.org

www.fundacionsura.com

living